



OPEN **V**

ECOSYSTEMS FOR INNOVATION
#EBNCONGRESS

5-7 JULY 2017 ENGHEN-LES-BAINS FRANCE

 #EBNCongress





EU-Brazil cooperation: make it happen!

EU-BR STI cooperation – Smart cities & Smart Systems

Joana Sampaio, Porto Digital



Porto Digital is located in Recife, in the Brazilian Northeast.



Porto Digital Technology Park

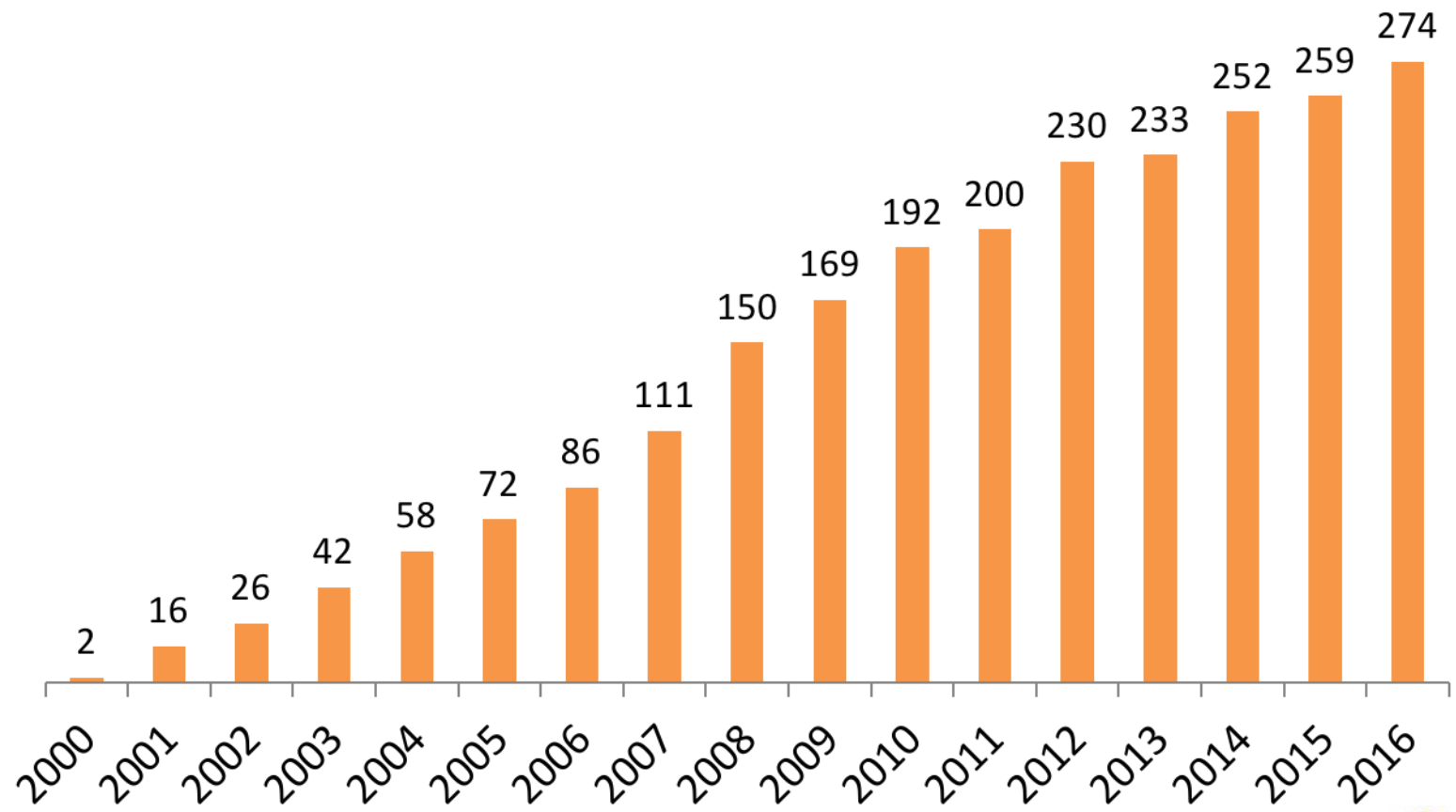
1,71 million square feet
277 organizations
>800 entrepreneurs
~8.500 employees
US\$ 435 million in revenue
2 Incubators; 1 Accelerator,
1 Co-Working...



 #EBNCongress



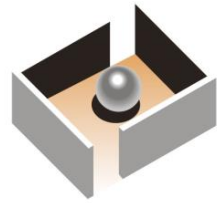
Porto Digital Evolution



OPEN

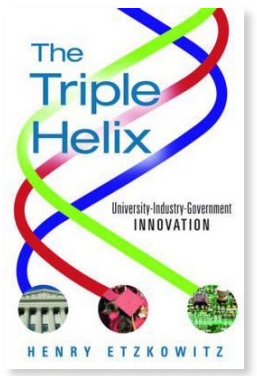
ECOSYSTEMS FOR INNOVATION
#EBNCONGRESS
5-7 JULY 2017 ENGHEN-LES-BAINS

Porto Digital Awards



ANPROTEC

Elected by unanimity host of the National Seminar in 2013 (2011)



Henry Etzkowitz reference of the Triple Helix model. (2009)



Prêmio Nacional de Empreendedorismo Inovador

Best Technology Park of Brazil (2007, 2011 and 2015)

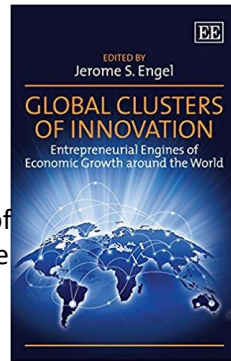


Considered by Business Week as one of the ten places in the world where the future is being created. (2009)



Elected by unanimity host of IASP International Conference in 2013 (2011)

To Jerome Engel, an example of governance and one of the best clusters in the world (2014)



One of the two innovation places for technology business in Bra:



Official Technology Cluster in Pernambuco (2008)

 #EBNCongress



SCIENCE PARKS: INNOVATION DYNAMOS IN BRAZIL

Established in Brazil since the end of the 1980s, science parks, alongside business incubators, currently operate as dynamos of the country's innovation system. They are science-and-technology-based productive complexes of a formal, concentrated and cooperative nature, comprising companies whose production is based on knowledge. In other words, they constitute

ecosystems with a high potential for transforming knowledge into social and economic development. According to the latest survey by the Ministry of Science, Technology and Innovation (MCTI), Brazil has almost 100 science parks with their own distinct characteristics and under a variety of models, as shown below:



MCTI and UnB 2013

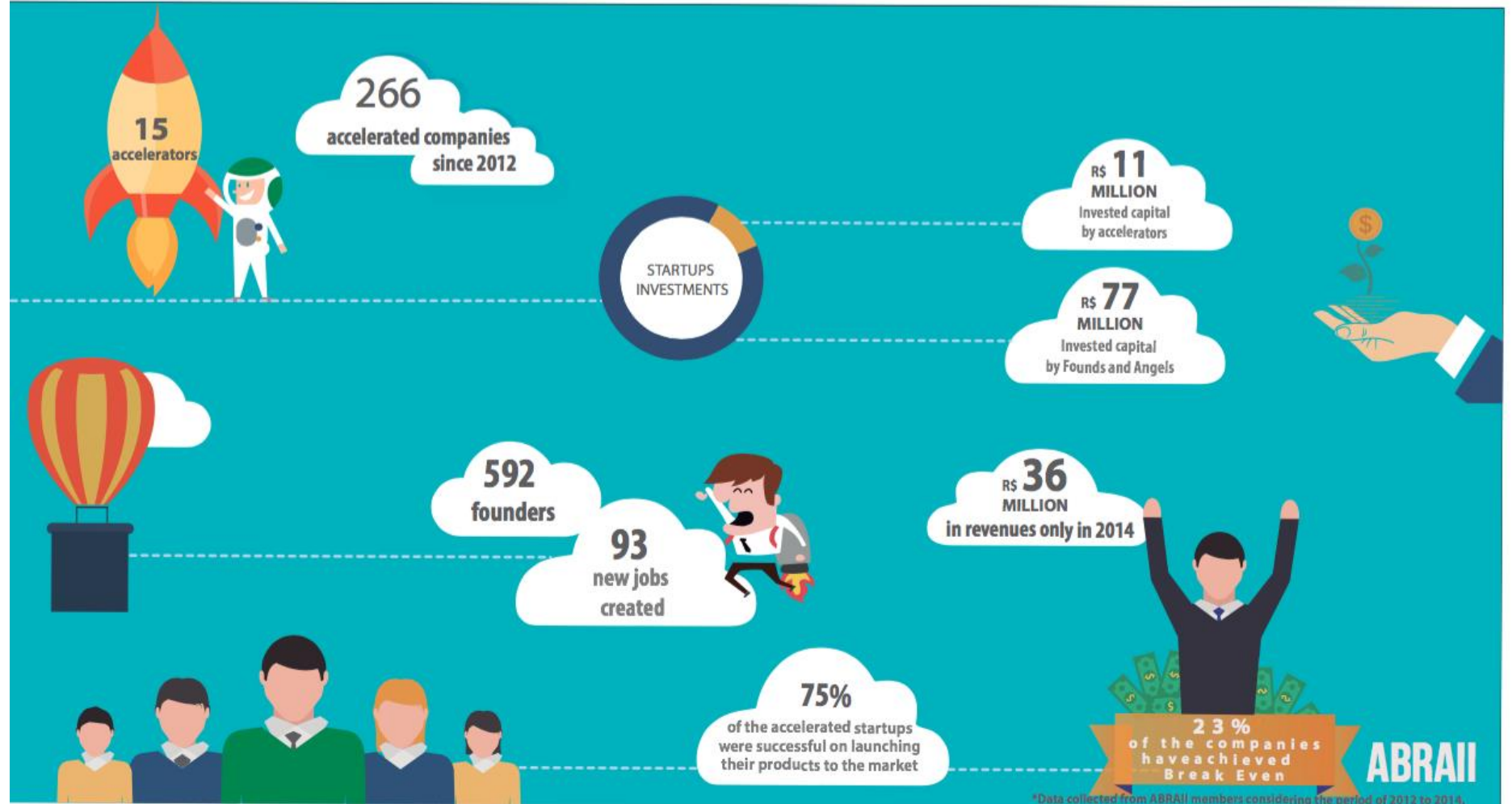
SCIENCE PARKS IN BRAZIL – MAIN AREAS OF ACTIVITY



Source: CDT/UnB 2013

Startups acceleration in numbers

The impact of Brazilian accelerators in the local entrepreneurial ecosystem is a consolidated reality, proven by relevant results and success cases.



*Data collected from ABRAI members considering the period of 2012 to 2014.

Source: Innovation in Brazil (Apex)

INCOBRA's focus is to increase and enhance Research & Innovation (R&I) Cooperation Activities between Brazil (BR) and European Union (EU) R&I actors, so that both regions get the best value out of the mutual cooperation.



Our research began with ICT, but soon it became obvious every aspect of technology had cities as a major catalyst. So our workgroup decided to focus on Smart Cities and Smart Systems.



Smart Cities & Smart Systems

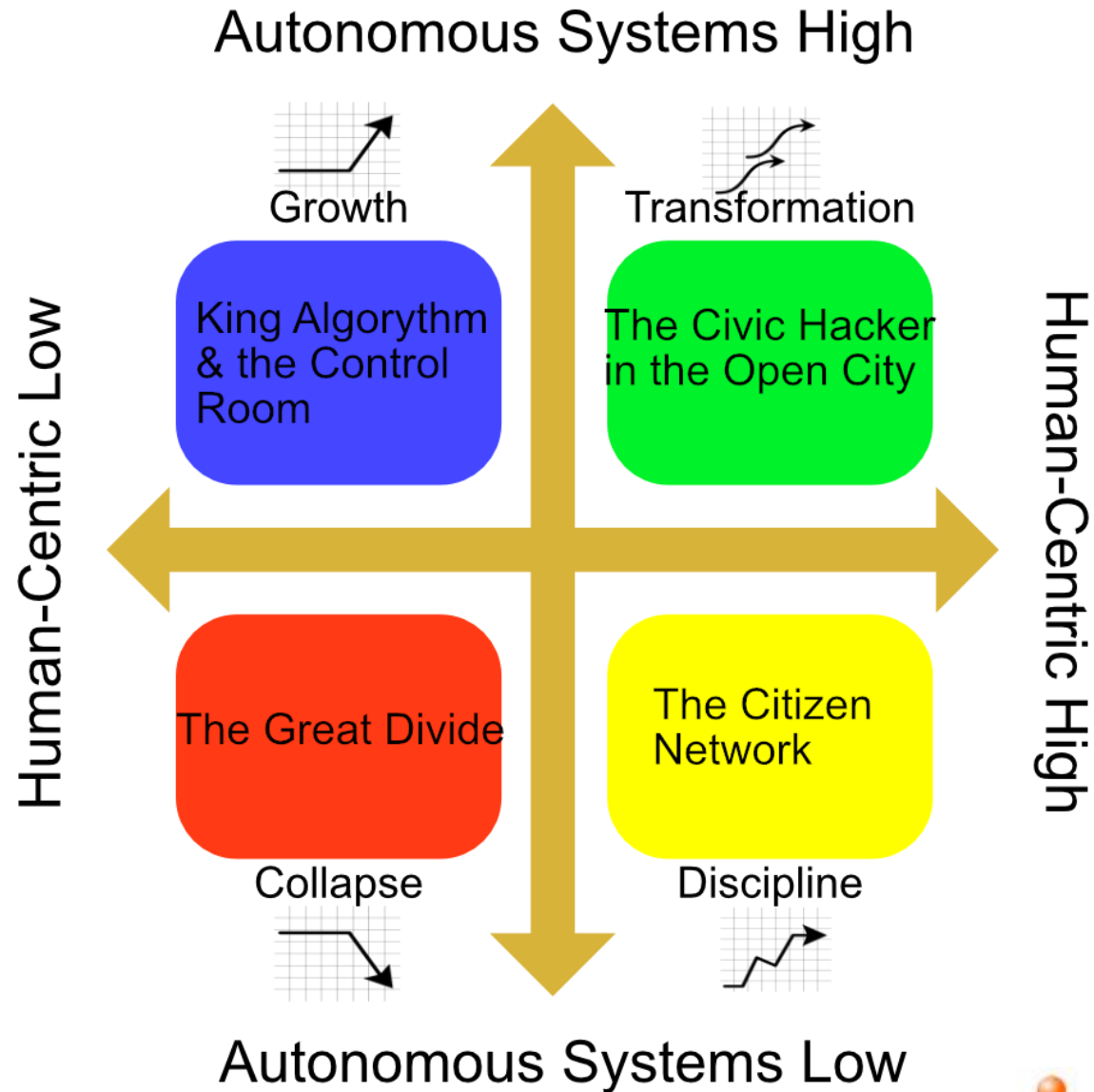
Objective:

To identify alternative scenarios on Smart Cities and Smart Systems looking for robust trajectories of R&I cooperation between the EU and Brazil.



Methodology:

2x2 Scenario, plus
 Four Generic Futures
 resulting in four
 different scenarios.



Action Plan Roadmap

1. Create bilateral task force to scan for funding and R&I opportunities.

2. Develop the Make it Together program to create and integrate open urban laboratories in Brazil and the EU.

3. Create the Open City Network think tank

4. Create task force to pressure Brazilian government into softening the rules for collaboration between Brazilian and EU organizations.

Thank you!

Joana Sampaio

joanasampaio@portodigital.org